

Product Summary

| | |
|-------------------------------|--------|
| V_{RRM} | 1200 V |
| $I_F (T_C=150^\circ\text{C})$ | 60 A |
| Q_C | 347 nC |

Features

- Low leakage current (I_R)
- Zero reverse recovery current
- Temperature independent switching behavior
- Positive temperature coefficient on V_F
- High surge current capacity
- Low capacitive charge

Benefits

- System cost savings due to smaller magnetics
- System efficiency improvement over Si diodes
- Reduction of heat sink requirements
- Enabling higher frequency
- Reduced EMI

Applications

- Switch mode power supplies (SMPS)
- Uninterruptible power supplies
- Server/telecom power supplies
- Power factor correction
- Solar

Package Pin Definitions

- Pin1 and backside - Cathode
- Pin2- Anode

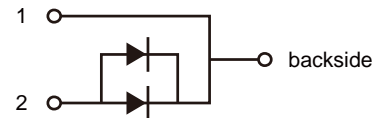
Package Parameters

| Part Number | Marking | Package |
|-------------|------------|----------|
| B2D60120H1 | B2D60120H1 | TO-247-2 |

Package: TO-247-2



Electrical Connection



Maximum Ratings ($T_c=25^\circ\text{C}$ unless otherwise specified)

| Symbol | Parameter | Test conditions | Value | Unit |
|---------------|--------------------------------------|--------------------------------------------------------------|---------|----------------------|
| V_{RRM} | Repetitive peak reverse voltage | | 1200 | V |
| V_{RSM} | Non-repetitive peak reverse voltage | | 1200 | V |
| I_F | Continuous forward current | $T_c=25^\circ\text{C}$ | 165 | A |
| | | $T_c=135^\circ\text{C}$ | 79 | |
| | | $T_c=150^\circ\text{C}$ | 60 | |
| I_{FSM} | Non-repetitive forward surge current | $T_c=25^\circ\text{C}$, $t_p=10\text{ms}$ Half sine wave | 340 | A |
| $\int i^2 dt$ | i^2t value | $T_c=25^\circ\text{C}$, $t_p=10\text{ms}$ | 578 | A^2S |
| P_{tot} | Power dissipation | $T_c=25^\circ\text{C}$ | 833 | W |
| | | $T_c=110^\circ\text{C}$ | 361 | |
| T_j | Operating junction temperature | | -55~175 | $^\circ\text{C}$ |
| T_{slg} | Storage temperature | | -55~175 | $^\circ\text{C}$ |
| | TO-247 mounting torque | M3 Screw | 0.7 | Nm |

Thermal Characteristics

| Symbol | Parameter | Value | | | Unit |
|--------------|------------------------------------------|-------|------|------|------|
| | | Min. | Typ. | Max. | |
| $R_{th(jc)}$ | Thermal resistance from junction to case | | 0.18 | | K/W |

Electrical Characteristics
Static Characteristics

| Symbol | Parameter | Test conditions | Value | | | Unit |
|----------|-----------------------|-----------------------------------------------------------------|-------|-------------|-------------|---------|
| | | | Min. | Typ. | Max. | |
| V_{DC} | DC blocking voltage | $T_j=25^{\circ}C$ | 1200 | | | V |
| V_F | Diode forward voltage | $I_F=60A$ $T_j=25^{\circ}C$ $I_F=60A$ $T_j=175^{\circ}C$ | | 1.46 2.1 | 1.95 3.4 | V |
| I_R | Reverse current | $V_R=1200V$ $T_j=25^{\circ}C$ $V_R=1200V$ $T_j=175^{\circ}C$ | | 20 70 | 400 700 | μA |

AC Characteristics

| Symbol | Parameter | Test conditions | Value | | | Unit |
|--------|---------------------------|-----------------------------------------------------------------|-------|--------------------|------|---------|
| | | | Min. | Typ. | Max. | |
| Q_C | Total capacitive charge | $V_R=800V$ $T_j=25^{\circ}C$ $Q_C=\int_0^{V_R} C(V)dV$ | | 347 | | nC |
| C | Total capacitance | $V_R=1V$ $f=1MHz$ $V_R=400V$ $f=1MHz$ $V_R=800V$ $f=1MHz$ | | 3991 328 235 | | pF |
| E_C | Capacitance stored energy | $V_R=800V$ | | 179 | | μJ |

Typical Performance

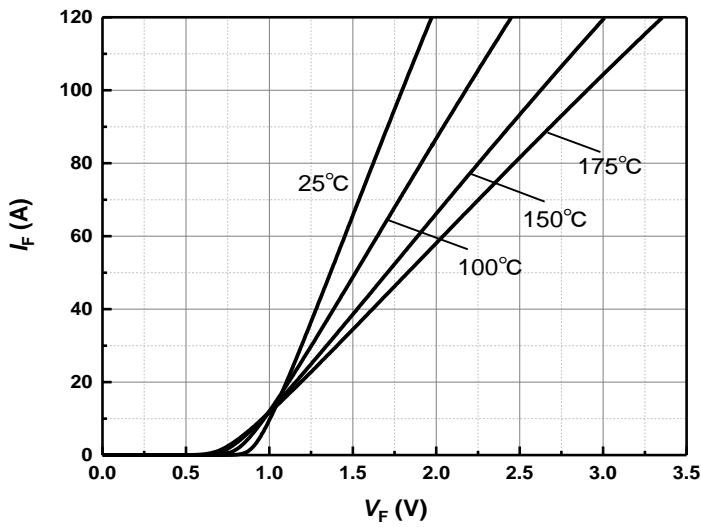


Figure 1 Typical forward characteristics

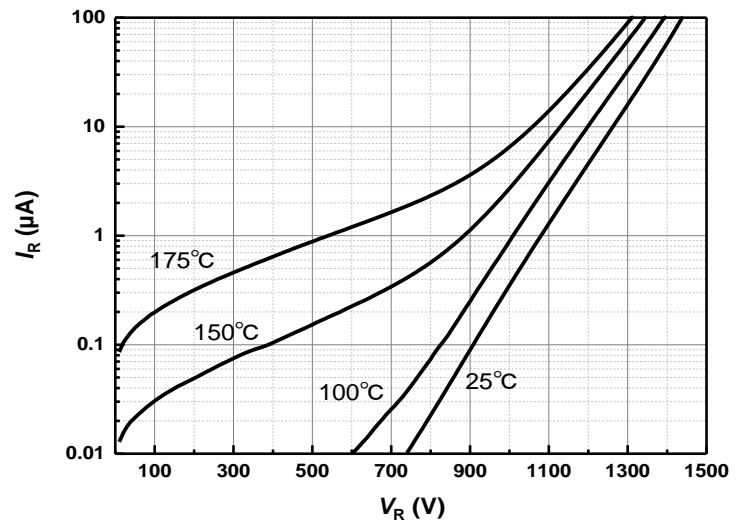


Figure 2 Typical reverse current as function of reverse voltage

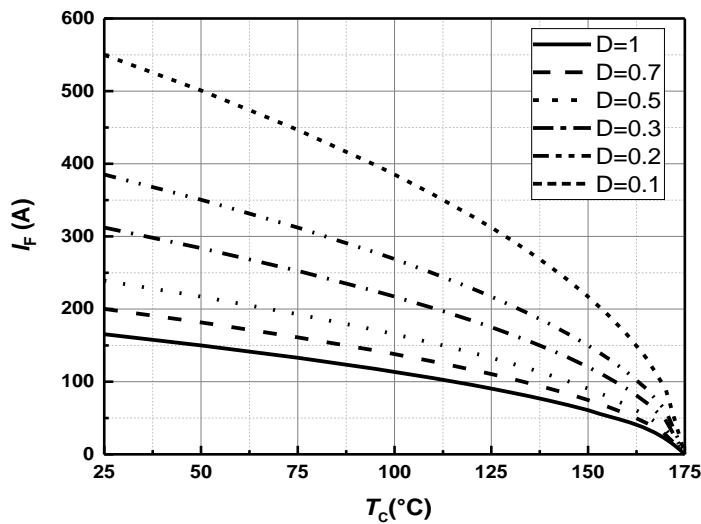


Figure 3 Diode forward current as function of temperature, D=duty cycle

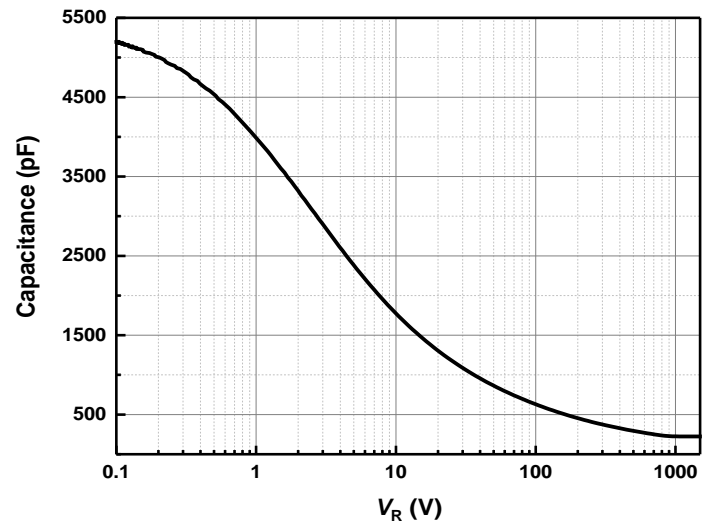


Figure 4 Typical capacitance as function of reverse voltage, $C=f(V_R)$; $T_j=25^{\circ}$ C; $f=1$ MHz

Typical Performance

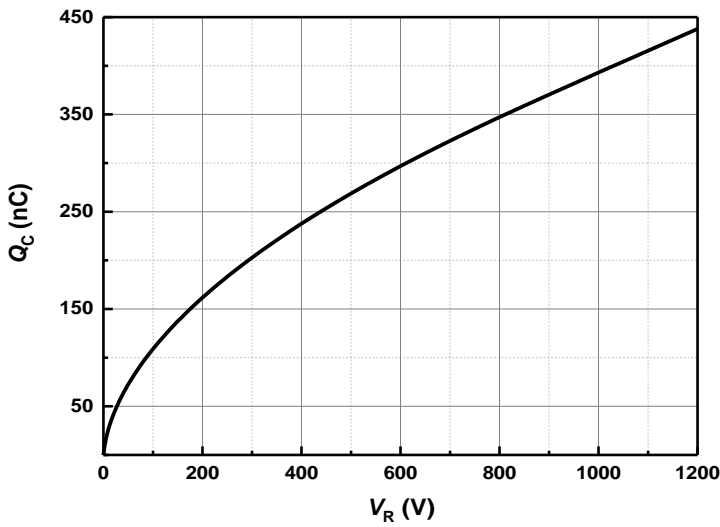


Figure 5 Typical reverse charge as function of reverse voltage

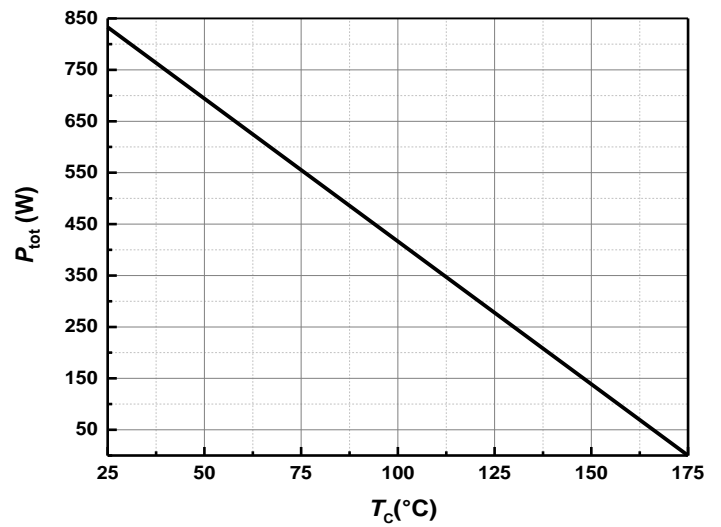


Figure 6 Power dissipation as function of case temperature

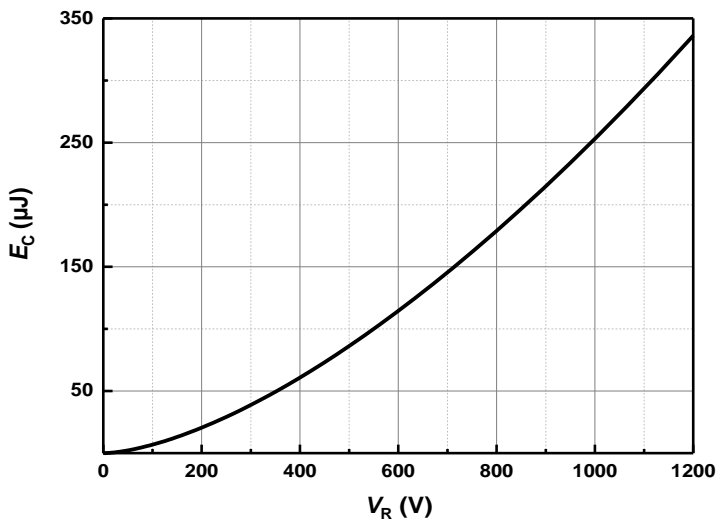


Figure 7 Capacitance stored energy

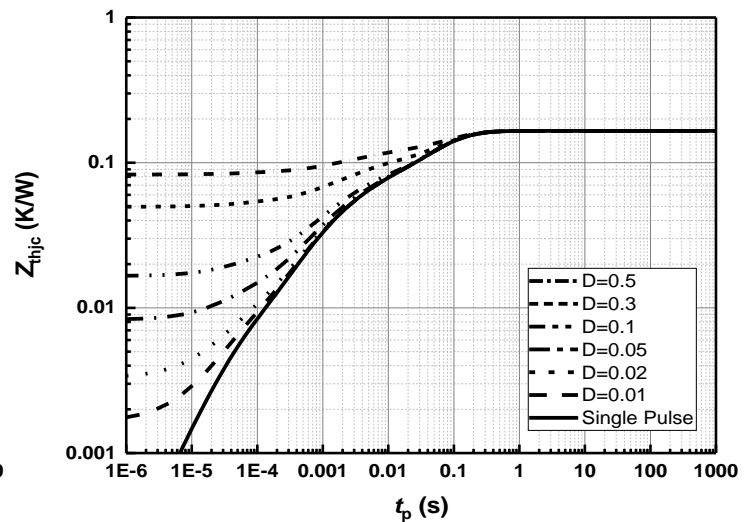
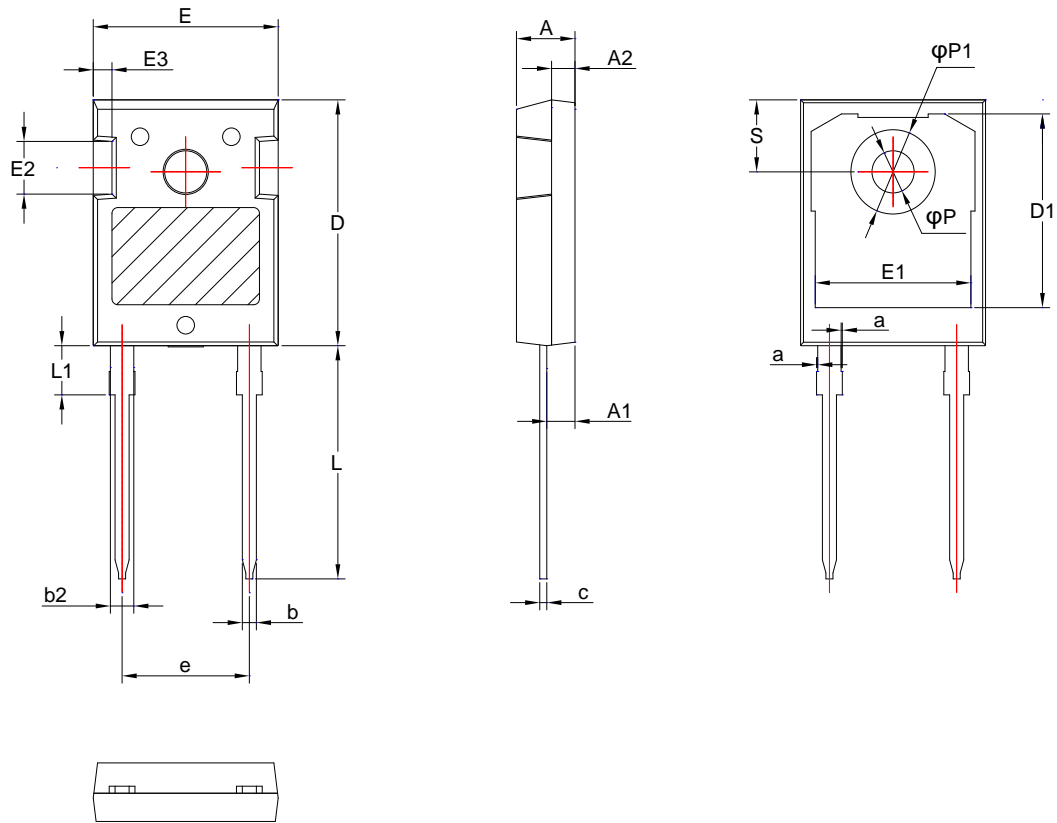
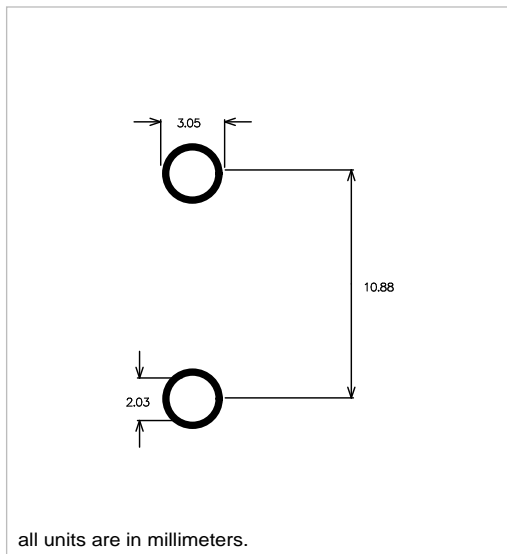


Figure 8 Max. transient thermal impedance, $Z_{thjc} = f(t)$, parameter: $D = t / T$

Package Dimensions



Recommended Solder Pad Layout



| SYMBOL | mm | | |
|--------|-----------|-------|-------|
| | MIN | NOM | MAX |
| A | 4.80 | 5.00 | 5.20 |
| A1 | 2.21 | 2.41 | 2.61 |
| A2 | 1.85 | 2.00 | 2.15 |
| a | 0 | - | 0.15 |
| b | 1.11 | 1.21 | 1.36 |
| b2 | 1.91 | 2.01 | 2.21 |
| c | 0.51 | 0.61 | 0.75 |
| D | 20.80 | 21.00 | 21.30 |
| D1 | 16.25 | 16.55 | 16.85 |
| E | 15.50 | 15.80 | 16.10 |
| E1 | 13.00 | 13.30 | 13.60 |
| E2 | 4.30 | 4.50 | 4.70 |
| E3 | 1.40 | 1.60 | 1.80 |
| e | 10.88 BSC | | |
| L | 19.62 | 19.92 | 20.22 |
| L1 | - | - | 4.30 |
| φ P | 3.40 | 3.60 | 3.80 |
| φ P1 | 7.00 | 7.20 | 7.40 |
| S | 5.95 | 6.15 | 6.35 |

Revision History

| Document Version | Date of Release | Description of Changes |
|-------------------------|------------------------|-------------------------------|
| Rev. 0.0 | 2023-03-27 | Release of the datasheet. |
| | | |
| | | |
| | | |

BASiC Semiconductor Ltd.
Shenzhen, China
© 2023 BASiC Semiconductor Ltd.
All Rights Reserved.

Information

For further information on technology, delivery terms and conditions and prices, please contact the nearest BASiC Semiconductor Office

Disclaimer

The information given in this document shall in no event be regarded as a guarantee of conditions or characteristics. With respect to any examples or hints given herein, any typical values stated herein and/or any information regarding the application of the device, BASiC semiconductor Ltd. hereby disclaims any and all warranties and liabilities of any kind, including without limitation, warranties of non-infringement of intellectual property rights of any third party.